

PRODUCT CATALOG

PU STONE

- PU COLOR DISPLAY
- PU STONE PANEL
- PU FAUX BRICK
- STONE SKIN BIG BOARD

RUUP ARCHITECTURAL PRODUCTS

TABLE OF CONTENTS

01

PU COLOR DISPLAY

02

PU STONE PANEL

03

PU FAUX BRICK

04

STONE SKIN BIG BOARD

Company Profile

Founded in 2020, Ruup Architectural Products emerged as a beacon of innovation in the architectural industry. The company's inception marked a significant milestone, driven by a collective vision of its founders who brought diverse expertise in construction, sales, and management to the table.

In its early days, Ruup navigated the unique challenges of a global landscape undergoing unprecedented changes. Undeterred, the company embraced the spirit of adaptability and resilience, leveraging its founders' experience to carve a niche in the competitive architectural products market.

From its humble beginnings, Ruup Architectural Products swiftly gained recognition for its commitment to cutting-edge design, functionality, and sustainability. The founders' dedication to pushing boundaries and redefining industry norms propelled Ruup into the forefront of innovation.

Over the years, Ruup's product portfolio expanded, introducing a diverse range of architectural solutions that captured the essence of contemporary design. The company's emphasis on customization, quality, and customer satisfaction became its hallmark, fostering strong relationships with clients and collaborators alike.

As Ruup ventured into new markets, including the launch of its product distribution channel in Edmonton, AB, the company continued to evolve. Strategic partnerships, technological integration, and a focus on sustainable practices further solidified Ruup's position as a forward-thinking industry player.

Despite the challenges and uncertainties that characterized the early years, Ruup Architectural Products' journey from 2020 reflects a story of growth, resilience, and a relentless pursuit of excellence. Today, Ruup stands as a testament to the transformative power of vision and determination, shaping the architectural landscape with innovative solutions that embody the spirit of a new era.

BUSINESS DISTRIBUTION

Founded in 2020, Ruup Architectural Products is a Canadian company that emerged as a beacon of innovation in the architectural industry. The company's inception marked a significant milestone, driven by a collective vision of its founders who brought diverse expertise in construction, sales, and management to the table.

RUPP Architectural Products takes pride in its extensive business distribution network, offering a diverse range of premium tiles, wood panels, metal decors, and more to customers across the United States, Canada, and Mexico. Our commitment to quality and innovation is seamlessly delivered to clients through strategic partnerships with distributors, retailers, and construction professionals. With a strong presence in these North American markets, RUPP ensures that our architectural products are easily accessible to architects, designers, and builders, enabling them to create stunning spaces with our high-quality materials. As we continue to expand our footprint, we are dedicated to providing unparalleled service and reliable solutions, making RUPP Architectural Products the preferred choice for those seeking excellence in architectural elements.



NORTH AMERICA

CANADA

1

USA

2

MEXICO

3



PU stone panel

PU stone(16MM)



S2-1

Size: 1200*600MM
Thickness: 16MM



S2-2

Size: 1200*600MM
Thickness: 16MM



S2-3

Size: 1200*600MM
Thickness: 16MM



S2-4

Size: 1200*600MM
Thickness: 16MM



S3-1

Size: 1200*600MM
Thickness: 30MM



S3-2

Size: 1200*600MM
Thickness: 30MM



S3-3

Size: 1200*600MM
Thickness: 30MM



S3-4

Size: 1200*600MM
Thickness: 30MM



S2-5

Size: 1200*600MM
Thickness: 16MM



S2-6

Size: 1200*600MM
Thickness: 16MM



S2-7

Size: 1200*600MM
Thickness: 16MM



S3-5

Size: 1200*600MM
Thickness: 30MM



S3-6

Size: 1200*600MM
Thickness: 30MM



S3-8

Size: 1200*600MM
Thickness: 30MM



S3-9

Size: 1200*600MM
Thickness: 30MM

PU stone panel

PU stone(30MM)

PU stone panel

PU stone(50MM)



S5-1

Size: 1200*600MM
Thickness: 50MM



S5-2

Size: 1200*600MM
Thickness: 50MM



S5-3

Size: 1200*600MM
Thickness: 50MM

PU stone panel

PU stone(50-100MM)



M5-1

Size: 1200*600MM
Thickness: 50MM



M5-2

Size: 1200*600MM
Thickness: 50MM



M6-1

Size: 1200*600MM
Thickness: 60MM



M6-2

Size: 1200*600MM
Thickness: 60MM



M8-2

Size: 1200*600MM
Thickness: 80MM



M10-1

Size: 1200*600MM
Thickness: 100MM

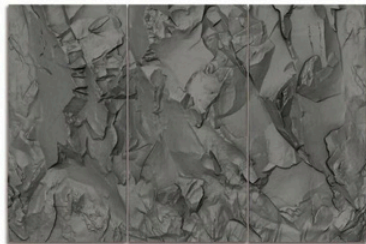
PU stone panel

PU mountain rock



Y6-1

Size: 1200*600MM
Thickness: 60MM



Y6-2

Size: 1200*600MM
Thickness: 60MM

Y6-3

Size: 1200*600MM
Thickness: 60MM

Y6-4

Size: 1200*600MM
Thickness: 60MM

PU stone panel

PU stone(25MM)



L3-1

Size: 1200*600MM
Thickness: 25MM



L3-2

Size: 1200*600MM
Thickness: 25MM



L3-3

Size: 1200*600MM
Thickness: 25MM



L3-4

Size: 1200*600MM
Thickness: 25MM



PU stone panel

PU stone(70MM)



L3-5

Size: 1200*600MM

Thickness: 70MM



PU stone panel

PU stone(50MM)



L3-6

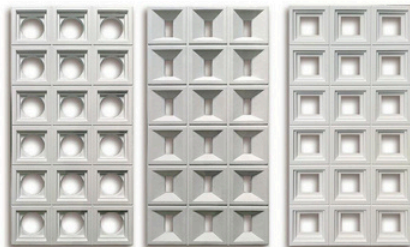
Size: 900*200MM

Thickness: 50MM



PU stone panel

PU stone(30MM)



K3-1

Size: 1200*600MM
Thickness: 30MM

K3-2

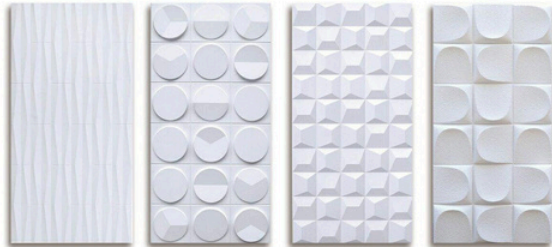
Size: 1200*600MM
Thickness: 30MM

K3-3

Size: 1200*600MM
Thickness: 30MM

PU stone panel

PU stone(25MM)



H3-1

Size: 1200*600MM
Thickness: 25MM

H3-2

Size: 1200*600MM
Thickness: 25MM

H3-3

Size: 1200*600MM
Thickness: 25MM

H3-4

Size: 1200*600MM
Thickness: 25MM

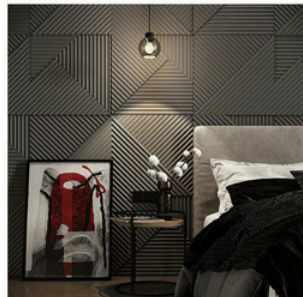


H3-5

Size: 1200*600MM
Thickness: 22MM

H3-6

Size: 1070*460MM
Thickness: 22MM



PU stone panel

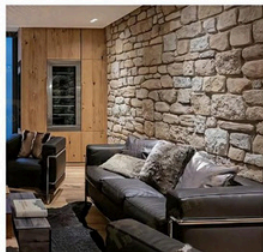
PU faux brick



W001

Size: 1500*750MM

Thickness: 60MM



W002-A

Size: 1500*750MM

Thickness: 60MM



W002-B

Size: 1500*750MM

Thickness: 60MM



W003-A

Size: 1500*750MM

Thickness: 60MM



W003-B

Size: 1500*750MM

Thickness: 60MM

PU stone panel

PU faux brick



PU stone panel

Stone skin big board

E304

Size: 500*500MM
Thickness: 30MM



E306

Size: 333*333MM
Thickness: 35MM

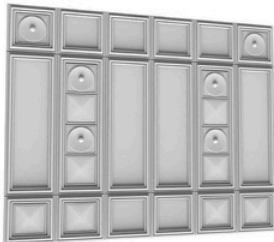


E307

Size: 333*333MM
Thickness: 35MM

E305

Size: 1500*500MM
Thickness: 30MM



PU stone panel

Stone skin big board



D001

Size: 800*2400MM
Thickness: 30MM



D002

Size: 600*2400MM
Thickness: 35MM



D003

Size: 600*2400MM
Thickness: 100MM



8840

Size: 300*2400MM
Thickness: 16MM



8842

Size: 300*2400MM
Thickness: 16MM



8843

Size: 300*2400MM
Thickness: 16MM

E310

Size: 400*2400MM
Thickness: 16MM



E311

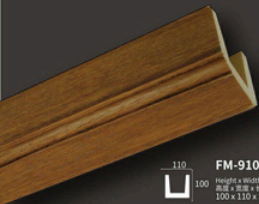
Size: 300*2400MM
Thickness: 20MM



E312

Size: 300*2400MM
Thickness: 12MM





FM-9103
Height x Width x Length
高度 x 宽度 x 长度
100 x 110 x 3505 mm



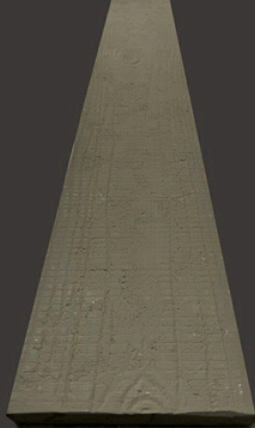
FM-9101
Height x Width x Length
高度 x 宽度 x 长度
65 x 120 x 3955 mm



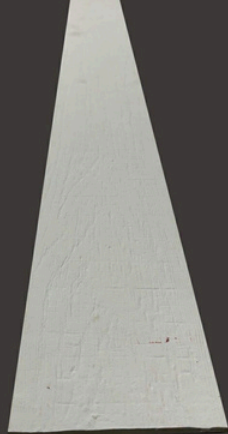
FM-9107
Height x Width x Length
高度 x 宽度 x 长度
30 x 280 x 3955 mm



FM-9102
Height x Width x Length
高度 x 宽度 x 长度
62 x 96 x 3505 mm



FM-9301
Height x Width x Thick
高度 x 宽度 x 厚度
1205 x 150 x 15 mm



FM-9302
Height x Width x Thick
高度 x 宽度 x 厚度
1205 x 120 x 15 mm



FM-9207
Height x Width x Thick
高度 x 宽度 x 厚度
75 x 137 x 223 mm
配套FM-9101



FM-9208
Height x Width x Thick
高度 x 宽度 x 厚度
73 x 112 x 223 mm
配套FM-9102

